

# Matlab and Image Processing

The MATLAB logo is displayed in a blue serif font. It consists of the word "MATLAB" followed by a registered trademark symbol (®). The logo is positioned on a light blue horizontal bar that spans the width of the slide.

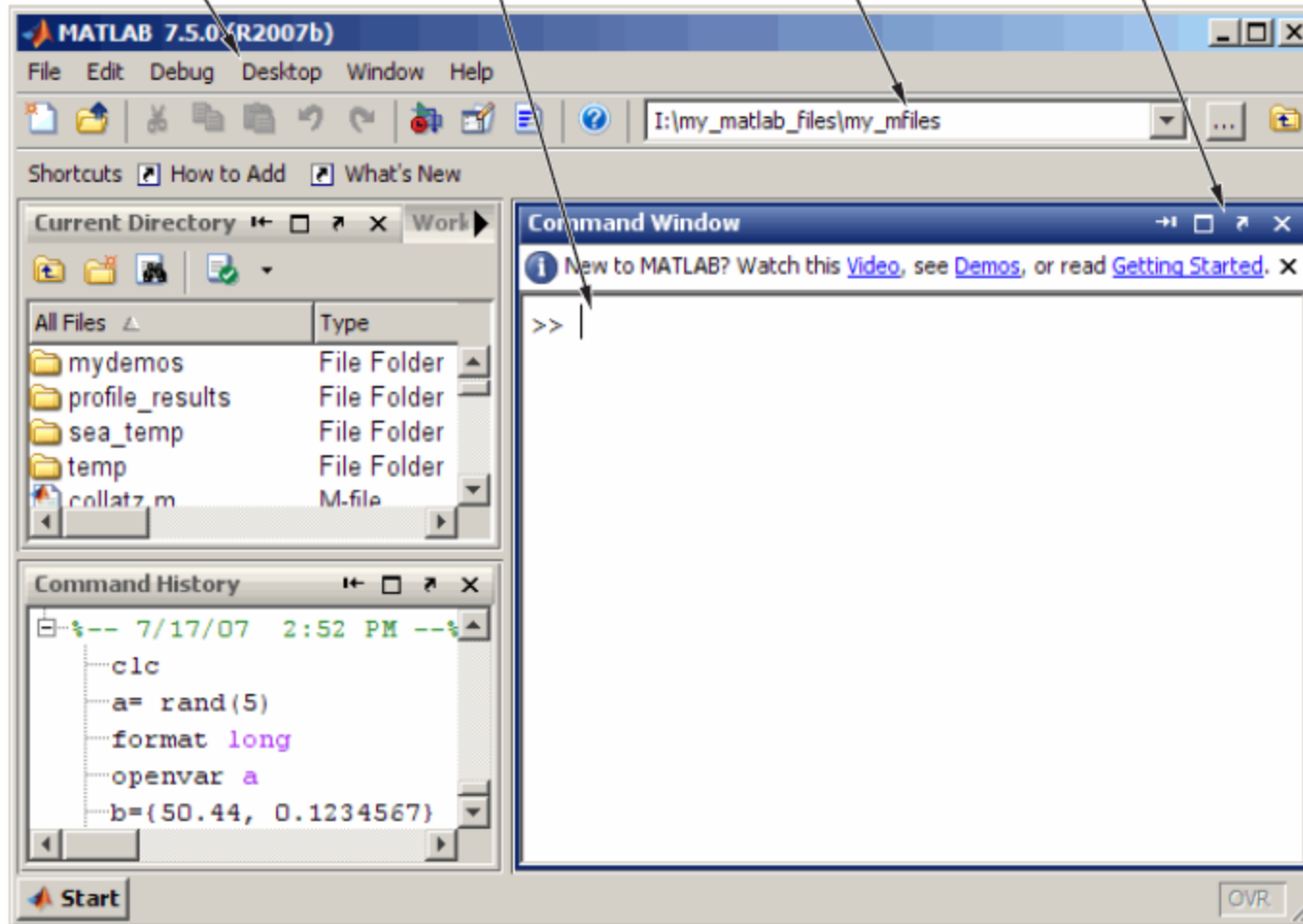
MATLAB®

Menus change, depending on the tool you are using.

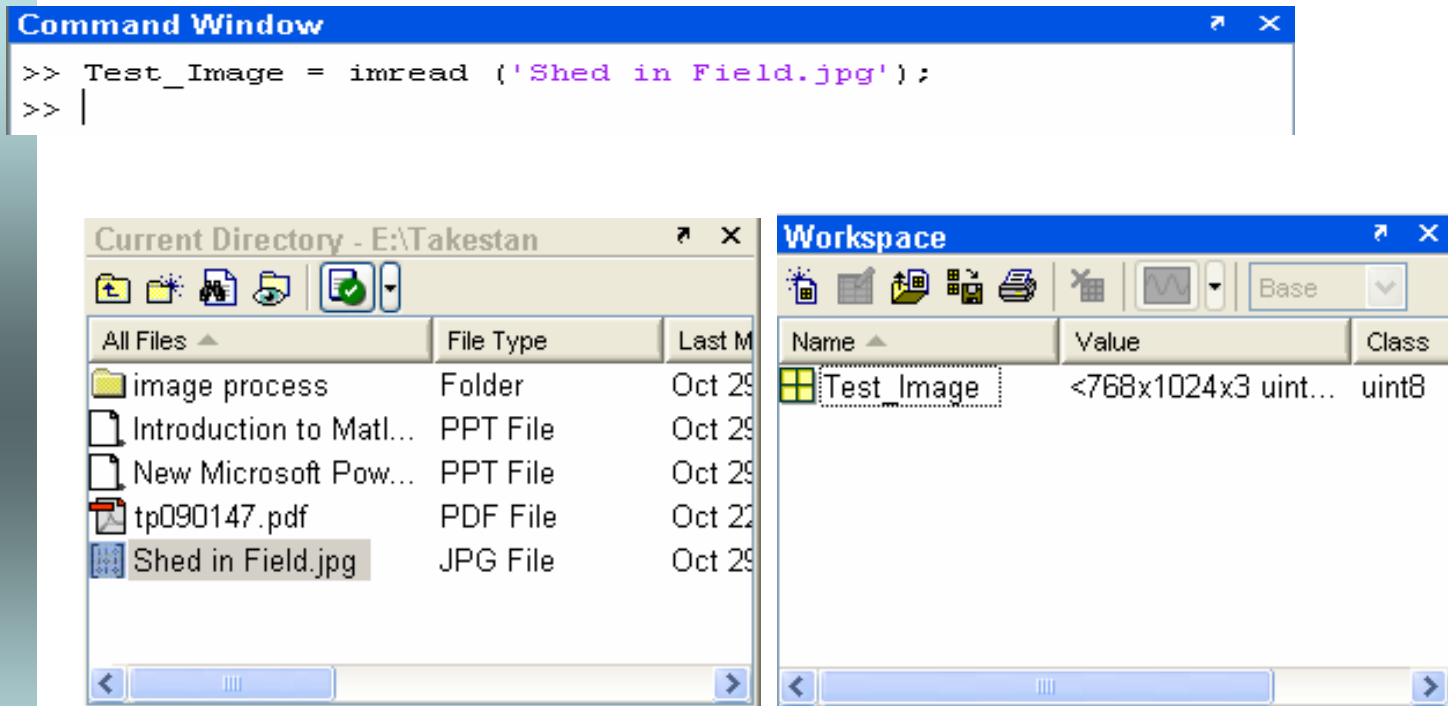
Enter MATLAB statements at the prompt.

View or change the current directory.

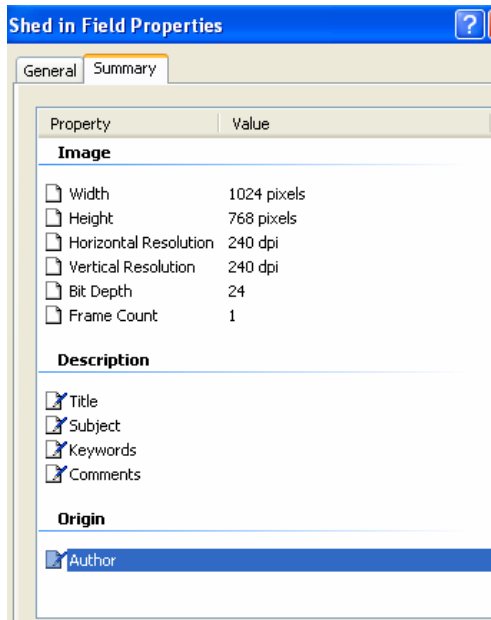
Move or resize the Command Window.



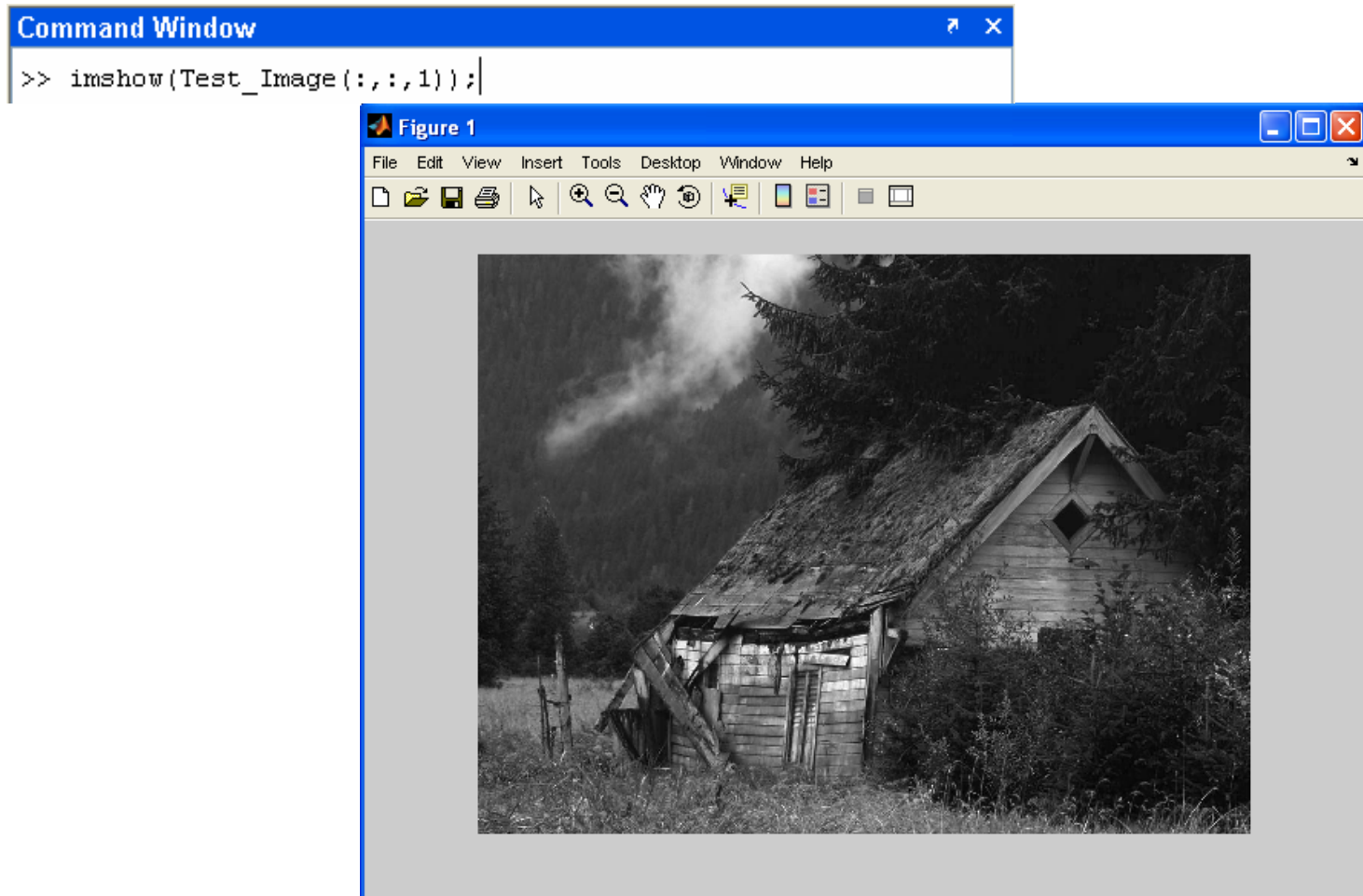
# IMREAD



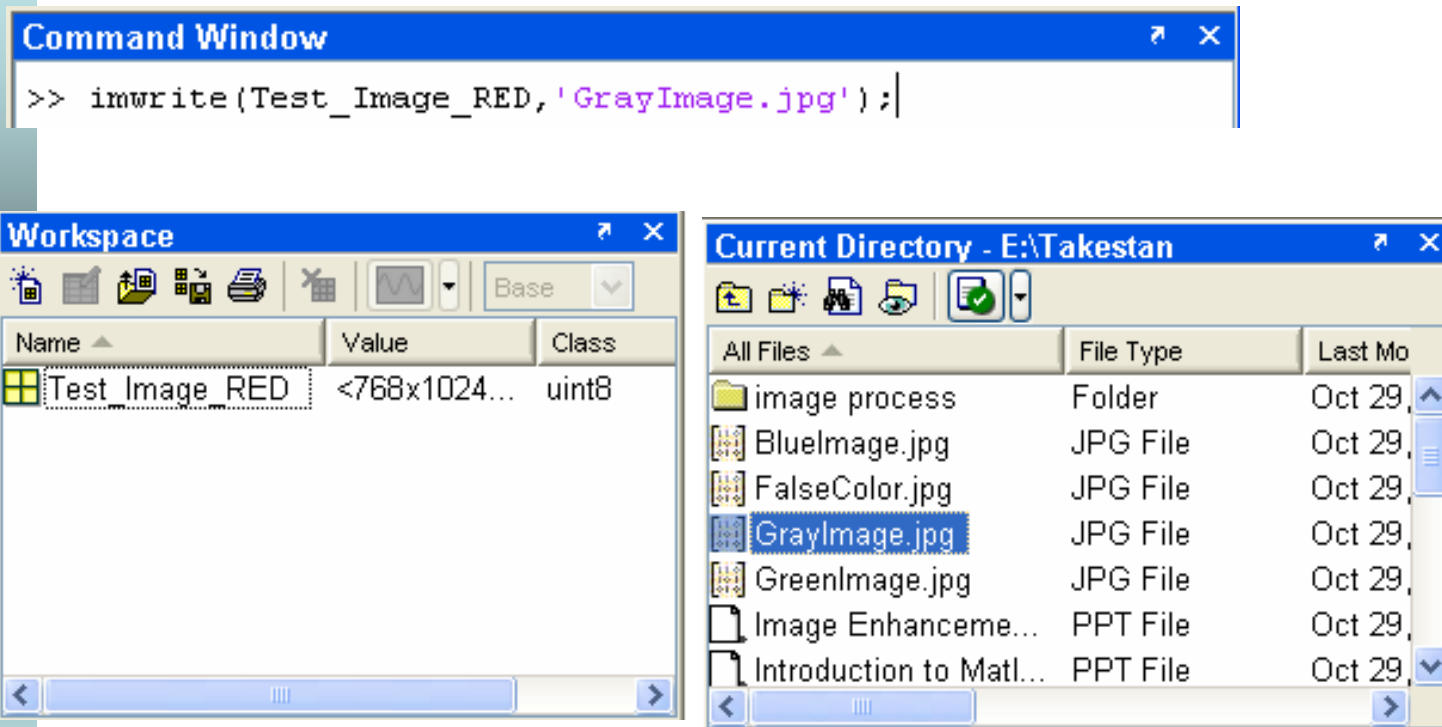
# Test Image



# IMSHOW



# IMWRITE



# Red Image



# Green Image



# Blue Image



# gray value Image(Red)



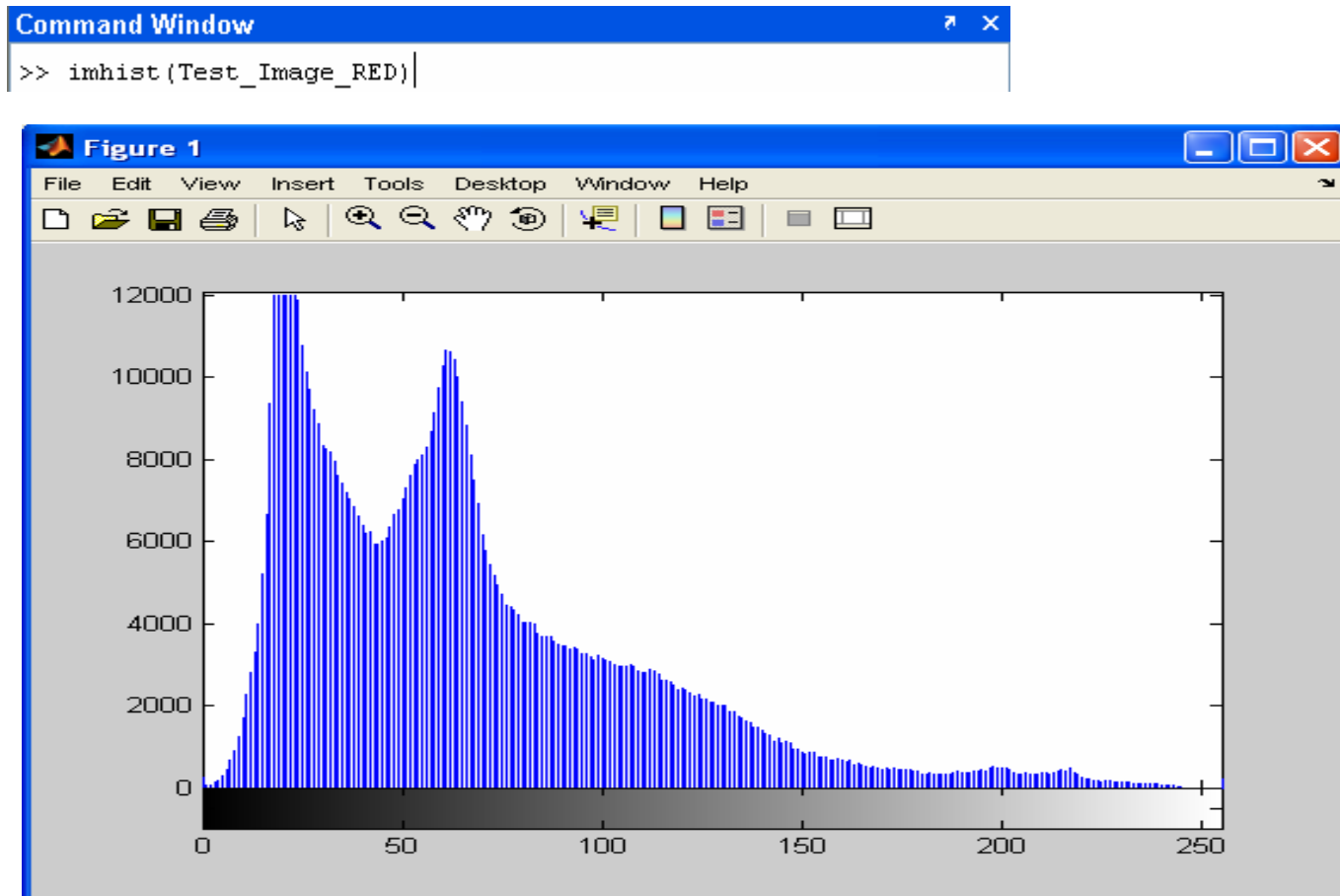
# Spatial Resolution



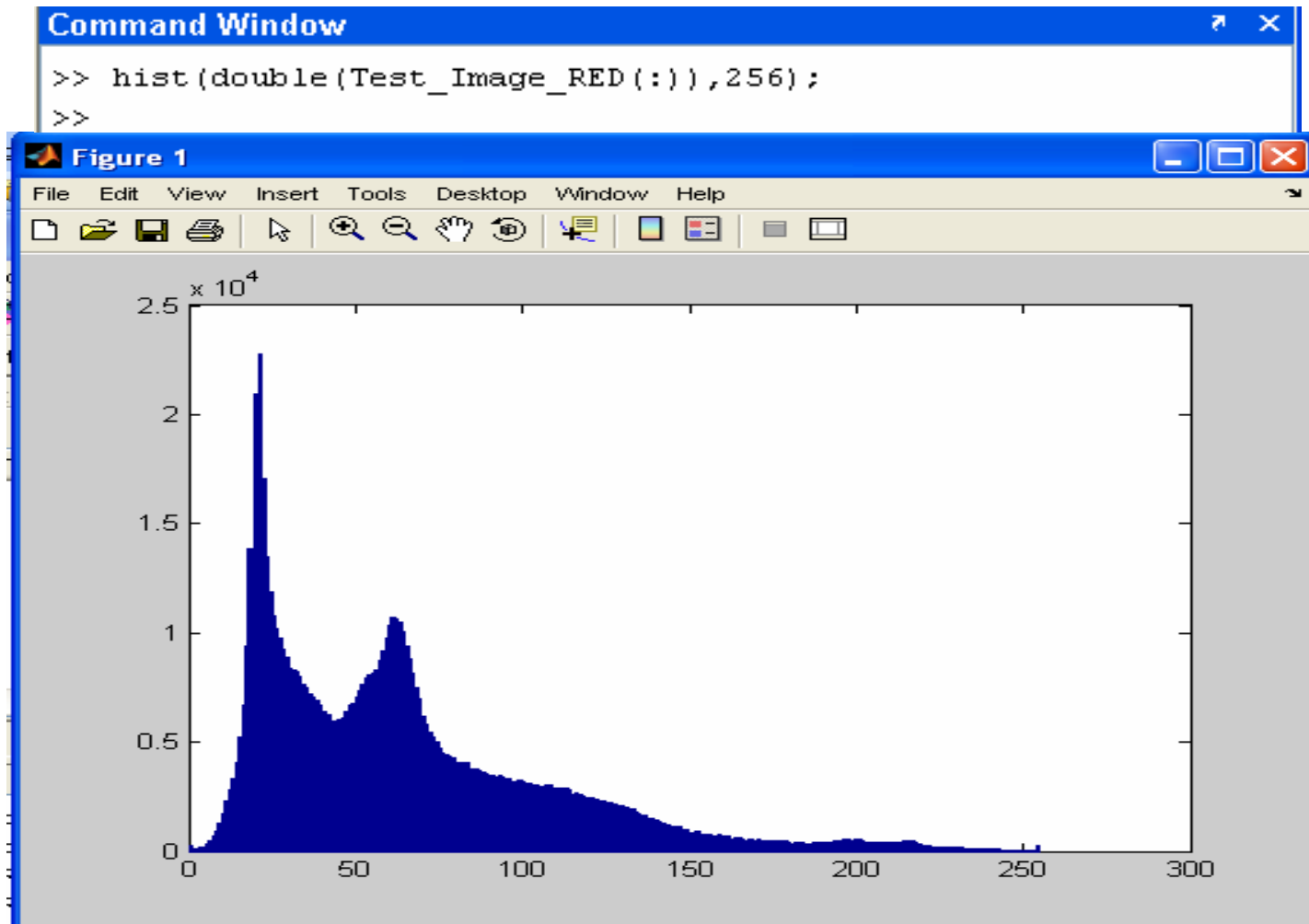
# Radiometric Resolution



# IMHIST



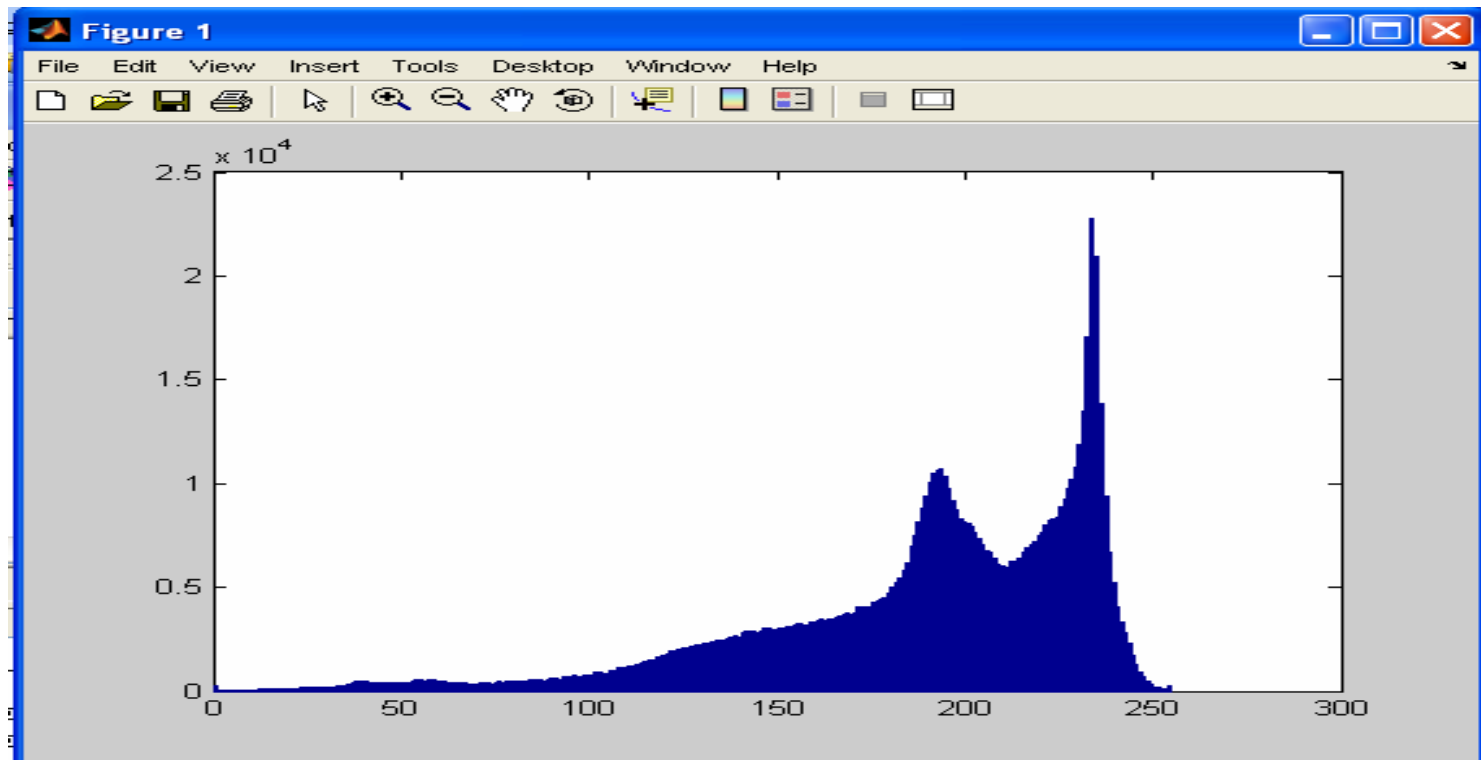
# HIST



# Negative Image



# Negative Histogram



# Mirror Image



# False Color

